

Performance DATA

Application & Refrigerant LBP R134a

Voltage	Model	Displace- ment cm ³	*1) Capacity (W)					*2) COP		*3) Motor type	Compressor cooling *4)			Net weight kg		Oil charge cm ³	
			Evaporating temperature					Run. capa.			ST	OC	FC	ST/FC	OC	ST/FC	OC
			-30°C	-25°C	-23.3°C	-20°C	-15°C	Ashrae	Cecomaf								
*5) 220-240V 50Hz	DGX110E12TAW	10.86	128	173	191	229	297	1.77	1.38	CSCR	O	-	-	9.9	-	280	-
	DGX125E14TAW	12.48	151	204	224	264	330	1.75	1.38	CSCR	O	-	-	9.9	-	280	-

Notes :

1) W=Capacity (kcal/h) / 0.860

3) RSIR Resistance Start Induction Run

RSCR Resistance Start Capacitor Run

CSCR Capacitor Start Capacitor Run

4) ST Static cooling

OC Oil cooling

2)C.O.P. = $\frac{\text{Capacity(kcal/h)} / 0.860}{\text{Motor input(W)}}$

5) Based on 220V 50Hz

FC Fan cooling

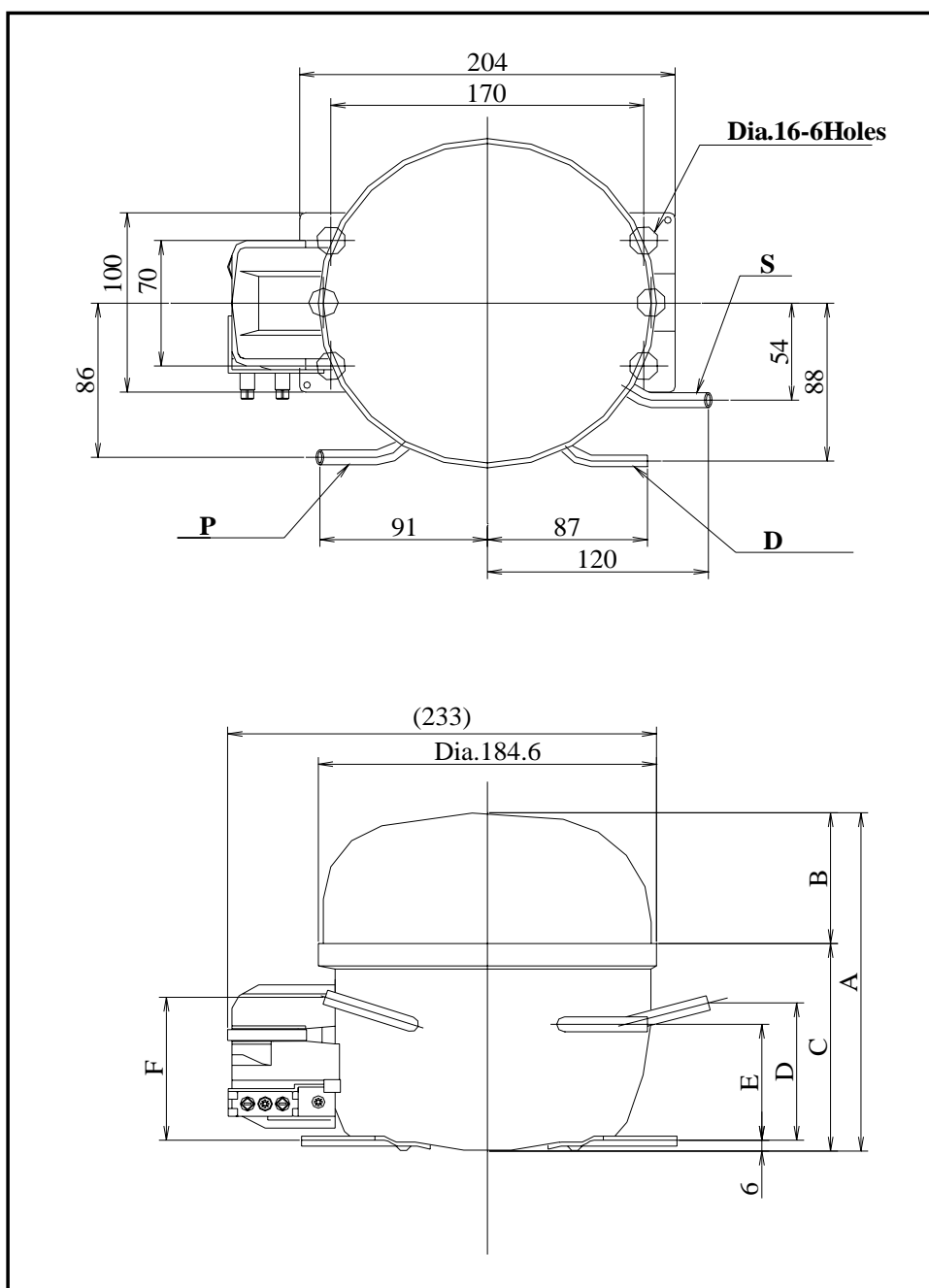
Dimensions

Application & Refrigerant LBP R600a

Voltage	Model	A	B	C	D	E	F	Tubes		
								D:Discharge	S:Suction	P:Process
220-240V 50Hz	DGX110E12TAW	201.0	73.4	127.6	83.9	70.4	75.2	6.5 I.D.	8.1 I.D.	6.5 I.D.
	DGX125E14TAW	211.8	84.2	127.6	83.9	70.4	75.2	6.5 I.D.	8.1 I.D.	6.5 I.D.

(unit: mm)

220-240V 50Hz



NOTES: All data covered by this catalog are given as general information only.

Since we are constantly improving our products, the specifications and availability are subject to change without notice.