

Performance DATA

Application & Refrigerant LBP R600a

Voltage	Model	Displace- ment cm3	*1) Capacity (W)						*2) C.O.P.		*3) Motor type	Compressor			Net weight		Oil charge	
			Evaporating temperature						Run. capa.			cooling *4)			kg		cm3	
			-30°C	-25°C	-23.3°C	-20°C	-15°C	NO	YES	ST		OC	FC	ST/FC	OC	ST/FC	OC	
220V 50Hz	DC91E10RAX5	9.07	90	125	140	168	219	1.40	1.46	RSIR/RSCR	O	-	-	9.3	-	280	-	
	DC100E11RAX5	10.26	104	147	158	198	258	1.41	1.48	RSIR/RSCR	O	-	-	9.3	-	280	-	
	DC110E13RBX5	10.86	116	158	174	209	270	1.40	1.50	RSIR/RSCR	O	-	-	9.9	-	280	-	
	DC125E15RAX5	12.48	132	181	200	241	313	1.40	1.48	RSIR/RSCR	O	-	-	9.9	-	280	-	
*5) 220-240V 50Hz	DC110E10RAW5	10.86	116	158	174	209	270	1.45	1.57	RSIR/RSCR	O	-	-	9.9	-	280	-	
	DC125E12RAW5	12.48	132	181	200	241	313	1.46	1.57	RSIR/RSCR	O	-	-	9.9	-	280	-	

Notes :

1) W=Capacity (kcal/h) / 0.860

3) RSIR Resistance Start Induction Run
RSCR Resistance Start Capacitor Run4) ST Static cooling
OC Oil cooling
FC Fan cooling2) C.O.P. = $\frac{\text{Capacity(kcal/h)} / 0.860}{\text{Motor input(W)}}$

5) Based on 220V

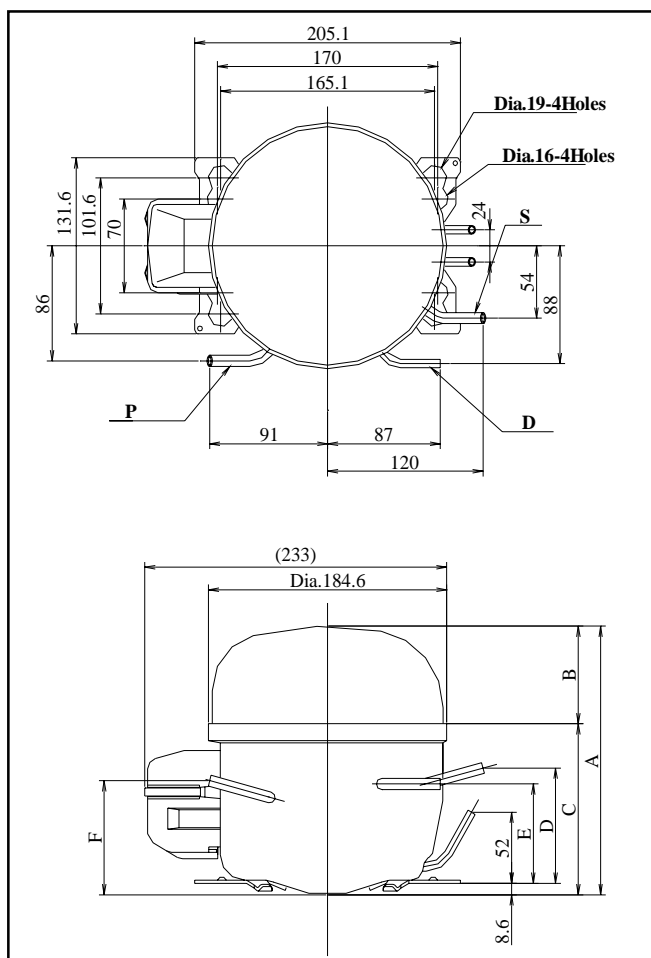
Dimensions

Application & Refrigerant LBP R600a

Voltage	Model	A	B	C	D	E	F	Tubes		
								D:Discharge	S:Suction	P:Process
220V 50Hz	DC91E10RAX5	195.2	73.0	122.2	84.7	71.2	86.0	5.1 I.D.	6.1 I.D.	6.1 I.D.
	DC100E11RAX5	195.2	73.0	122.2	84.7	71.2	86.0	5.1 I.D.	6.1 I.D.	6.1 I.D.
	DC110E13RBX5	195.2	73.0	122.2	84.7	71.2	86.0	5.1 I.D.	6.1 I.D.	6.1 I.D.
	DC125E15RAX5	195.2	73.0	122.2	84.7	71.2	86.0	5.1 I.D.	6.1 I.D.	6.1 I.D.
220-240V 50Hz	DC110E10RAW5	195.2	73.0	122.2	84.7	71.2	86.0	5.1 I.D.	6.1 I.D.	6.1 I.D.
	DC125E12RAW5	195.2	73.0	122.2	84.7	71.2	86.0	5.1 I.D.	6.1 I.D.	6.1 I.D.

(unit: mm)

220V 50Hz , 220-240V 50Hz



NOTES: All data covered by this catalog are given as general information only.

Since we are constantly improving our products, the specifications and availability are subject to change without notice.