

Performance DATA

Application & Refrigerant LBP R600a

Voltage	Model	Displacement cm ³	*1) Capacity (W)					*2) C.O.P.		*3) Motor type	Compressor cooling *4)			Net weight kg		Oil charge cm ³	
			Evaporating temperature					Run. capa.			ST	OC	FC	ST/FC	OC	ST/FC	OC
			-30°C	-25°C	-23.3°C	-20°C	-15°C	Ahrae	Cecomaf								
*5) 100V 50/60Hz	ESS100E10RAJ	10.26	134	181	200	240	308	1.54	1.20	RSCR	-	-	O	9.2	-	200	-
*6) 220-240V 50Hz	ESS60E55RAW	5.98	61	86	95	114	146	1.48	1.17	RSIR/RSCR	O	-	-	8.9	-	200	-

Notes :

1) W=Capacity (kcal/h) / 0.860

3) RSIR Resistance Start Induction Run
RSCR Resistance Start Capacitor Run

4) ST Static cooling
OC Oil cooling
FC Fan cooling

2) C.O.P. = $\frac{\text{Capacity(kcal/h)} / 0.860}{\text{Motor input(W)}}$

5) Based on 60Hz

6) Based on 220V

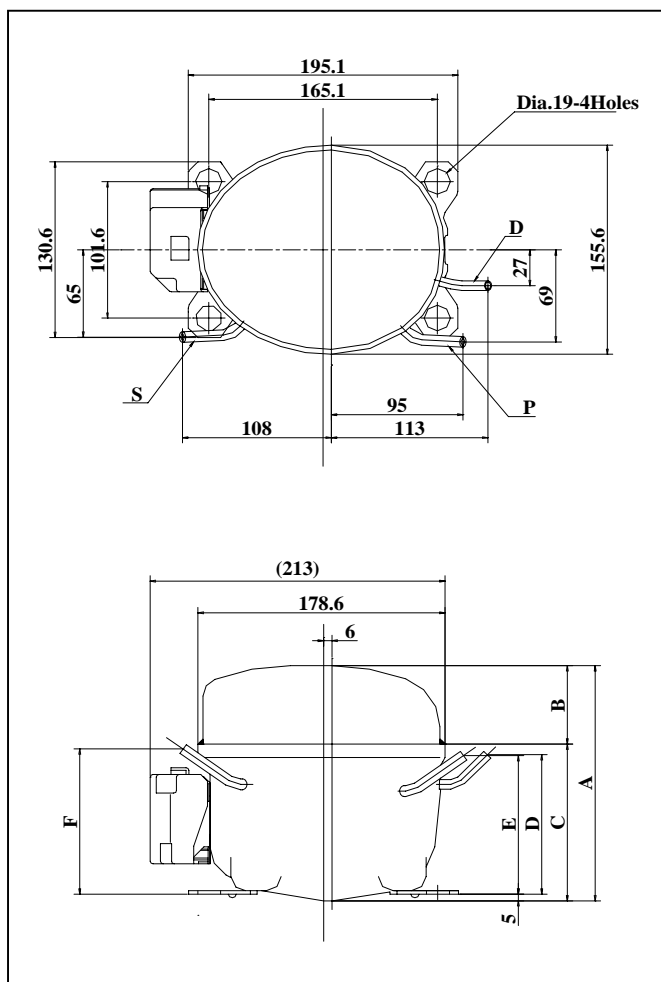
Dimensions

Application & Refrigerant LBP R600a

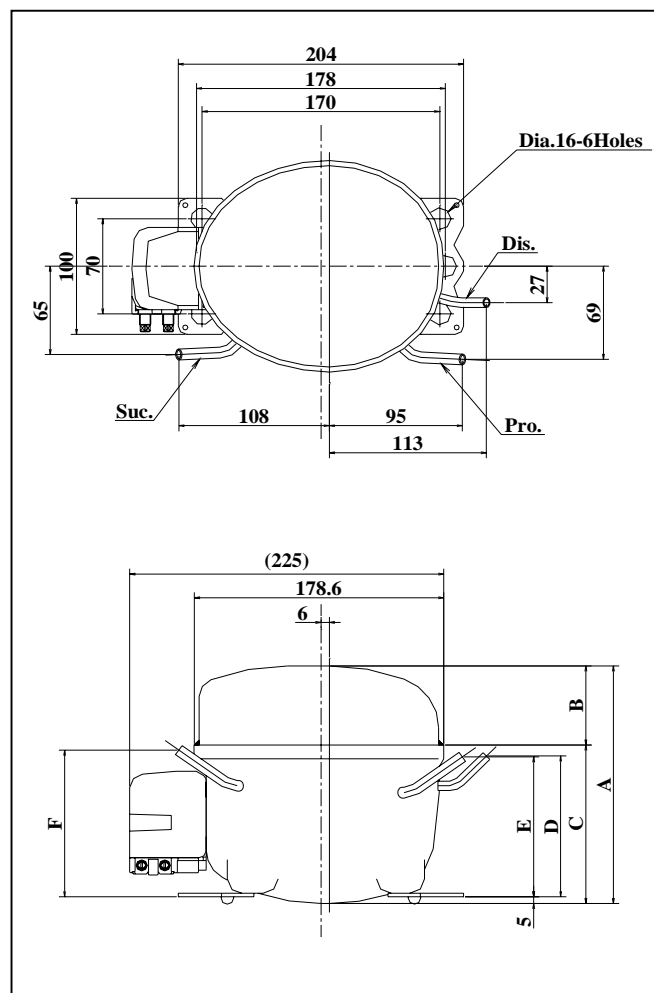
Voltage	Model	A	B	C	D	E	F	Tubes		
								D:Discharge	S:Suction	P:Process
100V 50/60Hz	ESS100E10RAJ	174.8	58.2	116.6	81.6	76.6	108.0	4.9 I.D.	6.5 I.D.	6.5 I.D.
220-240V 50Hz	ESS60E55RAW	174.8	58.2	116.6	104.0	103.0	108.0	4.9 I.D.	6.1 I.D.	6.1 I.D.

(unit: mm)

100V 50/60Hz



220-240V 50Hz



NOTES: All data covered by this catalog are given as general information only.

Since we are constantly improving our products, the specifications and availability are subject to change without notice.